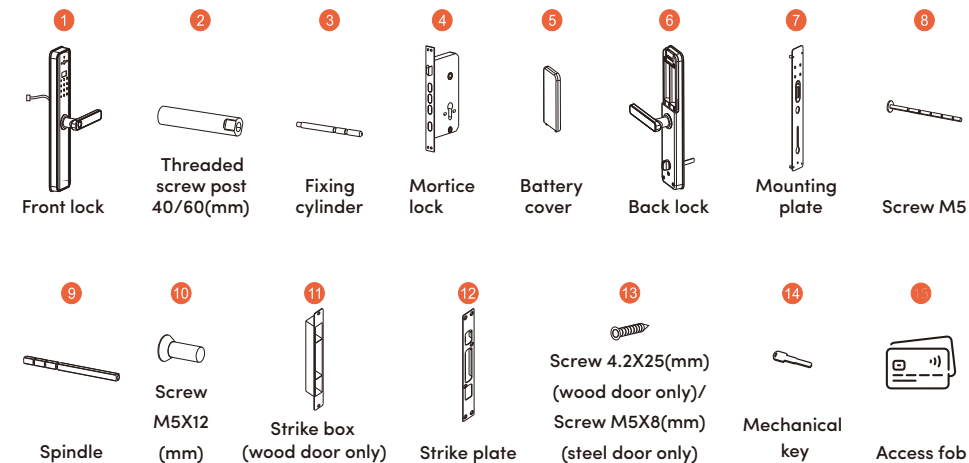


ML-NX6 User Guide

www.mcgrathsmartlocks.com.au

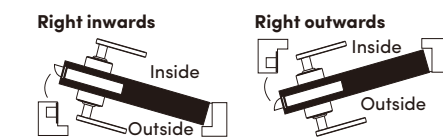


1 ACCESSORY

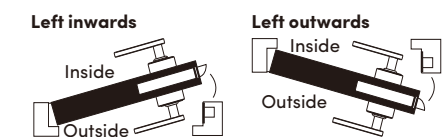


2 DOOR OPENING DIRECTION

2.1 Right handle opening



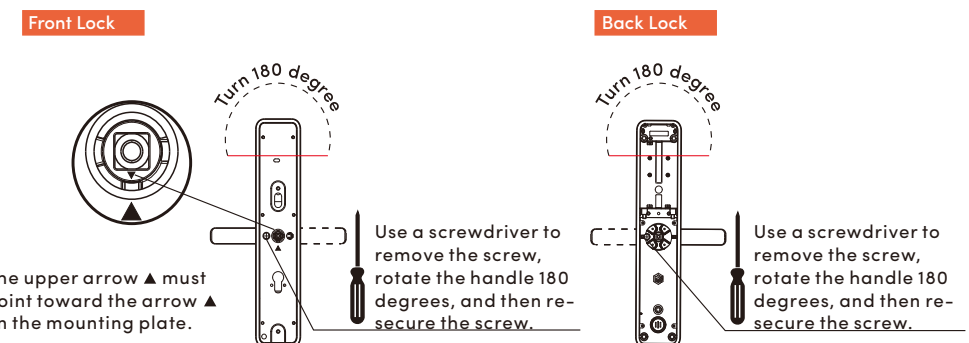
2.2 Left handle opening



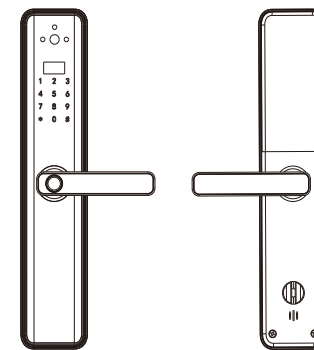
3 ADJUST THE HANDLE DIRECTION

The smart door lock is suitable for both left-hand and right-hand opening doors, as shown in the figure below. Using a screwdriver, remove the screw, rotate the handle 180 degrees, and then tighten the screw again.

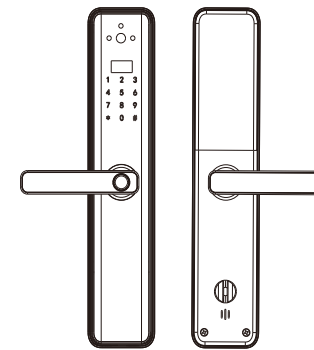
Note: Do not remove the screw inside the handle hole. Any damage caused by doing so will not be covered under warranty.



Right

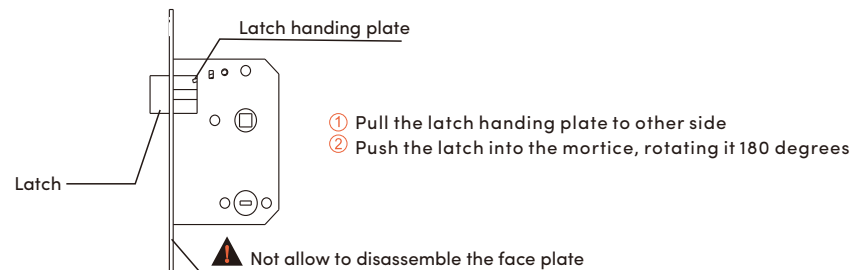


Left



4 ADJUST THE MORTICE DIRECTION

Adjust the mortice direction as required.



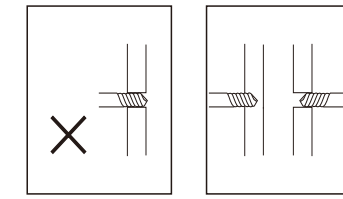
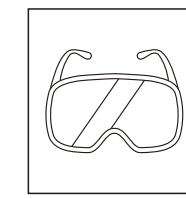
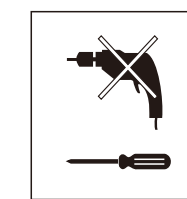
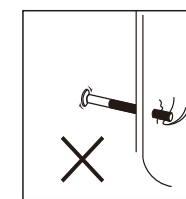
5 ACCESSORIES FOR VARIOUS DOOR THICKNESS

This product is suitable for door thicknesses between 40 mm and 120mm. If your door thickness falls outside this range, please contact us for further assistance. Be sure to select the correct accessories based on your specific door thickness.

Code and name	Specifications(mm)	door thickness ranges & QTY			
		40-60(mm)	60-80(mm)	80-100(mm)	100-120(mm)
9 Spindle (Cut the spindle according to the door thickness)	25	1	1	1	1
13 Screw 4.2X25(mm) (wood door only)	± 4.2	10	10	10	10
13 Screw M5X8(mm) (steel door only)	8	8	8	8	8
8 Screw M5 (Cut the screw according to the door thickness)	2	2 Or 2	2 Or 2	2	2
3 Fixing cylinder (Cut the fixing cylinder according to the door thickness)	2	2	2	2	2
2 Threaded screw post 40/60(mm)	40 60	2	2	2	2

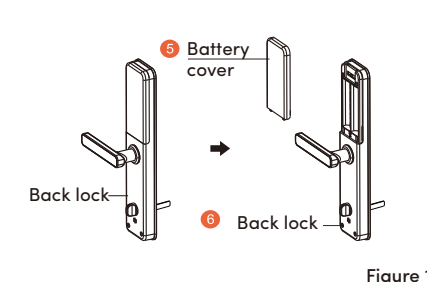
6 CAUTION BEFORE INSTALLATION

- Do not use excessive force during installation, as this may damage the lock.
- Use proper installation tools.
- Wear safety glasses to protect your eyes when drilling holes.
- Drill the door holes from both sides to avoid damaging the door edge.



7 INSTALLATION

Installation steps:

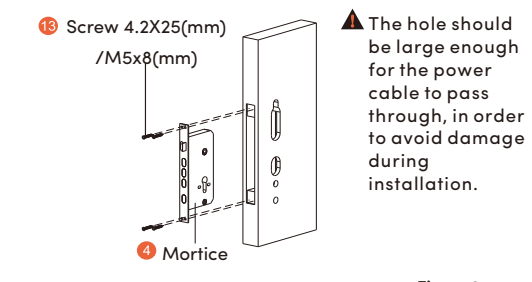


(1) As Figure 1:

- Remove the battery cover from the back lock.

(3) As Figure 3:

- Secure the two threaded screw posts onto the front lock.



(2) As Figure 2:

- Insert the mortice into the slot that was drilled according to the template.

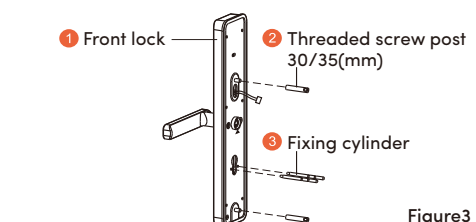
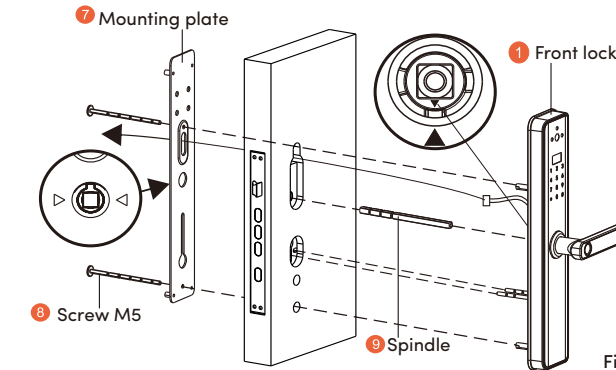


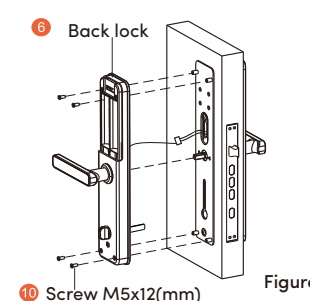
Figure 3



(4) As Figure 4:

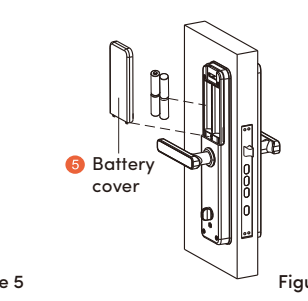
- Slide the spindle through the hub of the mortice lock, feed the connecting cable through the hole cut in the door while placing the front lock with rubber on the door(outside). Ensure the spindle sits within the lock hub.
- Tighten the back mounting plate with rubber onto the door(inside) to the front lock using the two long screws, but don't fully tighten.
- Test and adjust the lock position if it does not operate smoothly, then tighten the screws.

Note: To ensure the handle clutch is set correctly, the marking on the hub of the front lock must point toward the arrow on the front lock handle plate.



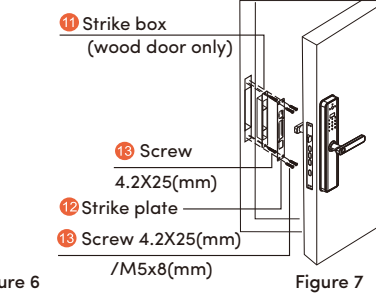
(5) As Figure 5:

- Connect the cable to back lock, then tighten the back lock onto the mounting plate using the four small screws.



(6) As Figure 6:

- Insert 4 AA alkaline batteries into the battery holder, then test the lock using the factory passcode or the app.



(7) As Figure 7:

- Insert the strike box into the slot and secure the strike with the screws. (Note: no strike box is needed for steel door frame.)
- After installation, test the lock to confirm it is working correctly.

8 CHECK POINTS AFTER INSTALLATION

- Ensure the face plate is flush with the door edge.
- Verify the latch bolt, dead bolt, and security bolt operate smoothly and without obstruction.
- Confirm the lock is installed vertically and remains stable.
- When installed correctly, the mortice lock should engage (throw the bolt) when the outside lever is lifted.
- The knob should turn smoothly and flexibly, and the security bolt extends or retracts accordingly with the knob's operation.



DOWNLOAD & INSTALL

McGrathlocks APP INSTALLATION REQUIRED

Enable your smart phone to scan QR code to download the APP. Also you can search "McGrathlocks" on APP store or Google play to download the APP.



RECOMMENDED: LOCK SETUP WITH APP

It is highly recommended to set up the lock using the McGrathlocks app.

The app simplifies programming and provides an easier way to manage your locks.



DOWNLOAD & INSTALL

Manual set up via keypad only

Please follow the instructions below to manually program the lock using the keypad.

You can add a BLE device after the lock is programmed manually provided you know the admin code.

*83# > Admin code# > Add lock via APP

CREATE NEW ACCESS

Add administrator (only 1)

*12# > 123 456# > New Code# > New Code#

- Enter *12#
- Input 123456# (the default code)
- Input new code#
- Repeat new code#

Add a new user with an access / pin code (250 maximum)

*80# > Admin Code# > New Code# > New Code#

- Enter *80#
- Input admin code#
- Input user code# (6-9 digits)
- Repeat new user code#

Tips: If you use the APP a 4 digit user code can be set.

Add a new user with an RFID card (1000 maximum)

*80# > Admin Code# > RFID

- Enter *80#
- Input admin code#
- Present the card to the card sensor area

Add a new user with fingerprint (100 maximum)

*80# > Admin Code# > Input Fingerprint

- Enter *80#
- Input admin code#
- Present fingerprint several times according to the voice guide.

MODIFY CODE

Modify admin code

*12# > Admin Code# > New Code# > New Code#

- Enter *12#
- Input old admin code#
- Input new admin code#
- Repeat the new admin code#

Modify user code

*10# > User Code# > New Code# > New Code#

- Enter *10#
- Input old user code#
- Input new user code#
- Repeat the new user code#

DELETE USER

Delete specified pin code

*72# > Admin Code# > Specified code#

- Enter *72#
- Input admin code#
- Input the specified code# that you wanted to delete

Tips: The admin code cannot be deleted.

Delete all user codes

*71# > Admin Code#

- Enter *71#
- Input admin code#

MANAGE VOICE

Turn on the lock voice

*30# > Admin Code# > 1#

- Enter *30#
- Input admin code#
- Input 1#

Delete all fingerprints

*70# > Admin Code#

- Enter *70#
- Input admin code#

Tips: The admin code cannot be deleted.

Delete all RFID cards

*69# > Admin Code#

- Enter *69#
- Input admin code#

Turn off the lock voice

*30# > Admin Code# > 0#

- Enter *30#
- Input admin code#
- Input 0#

RESET THE LOCK

Press and hold the reset button until you hear "please input initialization passcode" then input 000#. All pin codes, cards, BLE and fingerprint users will be deleted.

DEMO MODE

Demo mode is turned off by default prior to an Admin code being registered. If you wish to turn on demo mode input 24679#. Demo mode sets the lock access pin code to 123456# and any card or fingerprint will also open it. Registering an Administrator will take the lock out of demo mode.

LOW BATTERY ALERT

When battery power is less than 4.8V you will hear a low battery alert each time you wake the lock screen. Please replace batteries with new Alkaline type. Don't mix old and new batteries.

SCRAMBLING CODE FOR ANTI PEEP

Users may enter any random digits before or/and at the end of entering their correct pin code and still gain access. This feature makes it harder for an unauthorised user who may be watching you to guess your pin code.

INCORRECT CODE / CARD ALERT

If the wrong unlocking information is inputted five times the system will be locked out for 2 minutes. The lock can only be operated by the APP during the lockout period.

PASSAGE MODE

Passage mode keeps the door unlocked, useful when gardening or bringing in groceries from the car etc.

To activate passage mode, enter a valid unlock code then press 123# within 5 seconds. The door will remain unlocked.

To remove from passage mode, unlock using a valid code or card. If you engage passage mode via the APP you must use the APP to disengage passage mode.

FAQS

Keypad on lock does not respond

- Please check the batteries are installed correctly.
- If the lock had been working OK, please replace the batteries with new AA Alkaline type.

The door will not lock

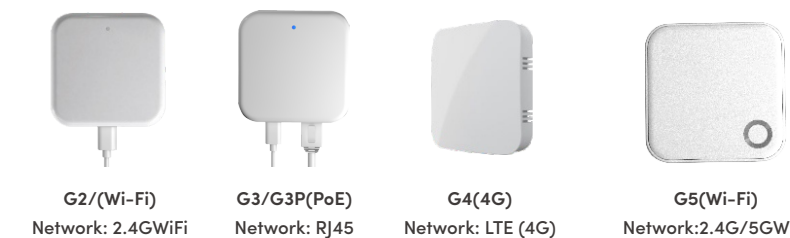
- Ensure the lock is not in demo mode.
- Check to see if the lock is in passage mode.
- Refer to installation guide to ensure the triangle on the lock hub is in correctly aligned.

Battery performance is poor.

- Ensure all batteries are new Alkaline type.
- Ensure the lock connecting cable is not pinched.
- Check for and update lock firmware.

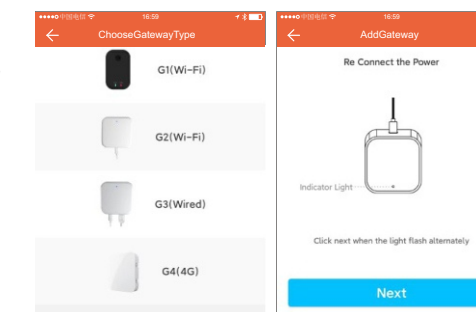
GATEWAY

Gateway type



ADD GATEWAY

- Open the McGrath Locks app and log in to your administrator account.
- Tap the menu icon (≡) in the top left corner of the home screen.
- Select 'Gateway' from the sidebar menu.
- Tap the "+" symbol in the top right corner.
- Choose your gateway model from the list provided.
- Connect the gateway to power, while the light is alternatively flashing red and blue, press the "+" symbol.
- Select the network required, enter the Wi-Fi password, enter the gateway name.



- Notice: If the process times out, please disconnect from power and try again.
- *Gateway coverage distance: 10 meters without obstruction

Gateway functionality

The gateway is an accessory for the lock that connects it to the network. With a gateway connected you can remotely manage the lock, such as opening the door or deleting a passcode.

GatewayFunctions

	Without Gateway	With Gateway	
Assign random pin codes	✓	✓	The door lock can function normally without a gateway. However, to remotely modify or delete pin codes, issue fingerprints or cards, open the door remotely and access other features, a gateway is required.
Door Opening with App	✓	✓	
Set permissions	✓	✓	
Remotely modify and delete pin codes	✗	✓	
Remote card issuance	✗	✓	
Open door remotely	✗	✓	
Upload door records log in real time	✗	✓	